

VisiTrac

Basic and Real-Time

IMMEDIATE INSIGHT INTO BATCH SERVICE LEVEL AGREEMENTS

The many critical activities that occur in the batch environment - intensive application processing, backups, file reorganization and more - must be balanced with the need to deliver information to the business as planned, as scheduled, and as agreed upon within Service Level Agreements (SLA's).

Sometimes batch schedules slip without notice. Other times, when slippage and slowdowns become apparent, it is difficult to quickly pinpoint the root of the problem without sorting through SMF record details and writing custom one-off programs to retrieve data from performance management products.

VisiTrac monitors production batch system SLA's from an MS-Windows desktop and provides an immediate, in-depth flowchart-based understanding of the structure, critical path, and performance of production batch cycles.

VisiTrac reduces or eliminates the time and effort needed to analyze SMF records or write one-off, one-time reports to examine performance management data. Equally important, VisiTrac can provide almost immediate insight into the past and present batch environment by quickly analyzing job histories and letting operations analysts know now if problems are about to occur.

FAST PROBLEM ISOLATION

VisiTrac is delivered with capabilities for fast problem isolation utilizing the reports and GUI flowchart of the VisiTrac desktop. The flowchart documents the flow for each batch application and shows the flowchart of all the jobs of each cycle. Critical path is color-coded to indicate Abends / Restarts and delays. The Critical Path report of VisiTrac is used to determine the causes of changes to cycle elapsed time and provide the details needed to begin tuning activities for the critical path. The Critical Path report reveals all the jobs comprising the critical path by job name, start time, end time, and duration.

REPORTS GENERATED BY VISITRAC

Critical Path Report: the causes of cycle elapsed time can be determined. It can be used as the basis of tuning efforts to reduce the elapsed time of individual critical path jobs. These will

produce a direct reduction of elapsed time for the total batch cycle. VisiTrac delivers several ways to quickly discover in-depth information regarding the batch environment.

Process Summary Report: provides a quick check of the batch application's current health by providing completion time, target time, and status of the last completed cycle for each SLA.

Process Performance History: monitors long-term trends in completion times of individual cycles that deviate from normal trends.

Task Detail Report: reveals all tasks leading to batch delivery for the SLA.

Top-20 Critical Path Tasks by Duration Chart: used to isolate problem jobs and investigate possible problems within an individual job. It provides a plot for the jobs in the critical path, including current cycle job duration, average job duration, and current CPU time.

Process Gantt Charts quickly identify which tasks are running at any specific time during the overall execution of the cycle.

PROACTIVE ANALYSIS AND MODELING

VisiTrac helps companies stay ahead of potential performance problems by proactively revealing any signs of degradation in batch cycles.

VisiTrac enables users to establish projected start and stop times, the SLA-specific start/stop times, as well as the threshold for providing alerts if actual times approach violation of SLA times.

Because VisiTrac monitors trends over time, it enables operations analysts to easily keep track of performance and initiate any necessary tuning before noticeable problems occur.

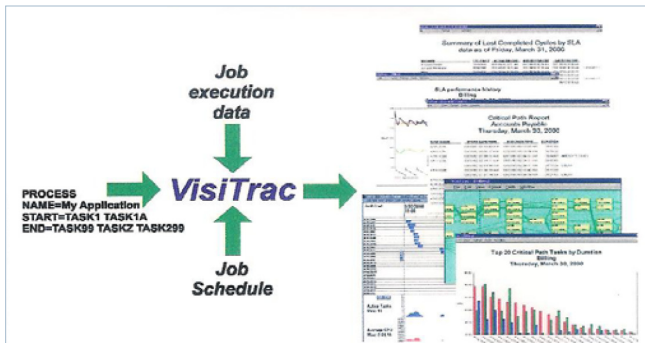
For even greater proactive analysis, VisiTrac delivers a built-in modeling component that enables operations analysts to conduct "What-If" analysis of batch flows, determine what changes could be made to improve processing and discover the impact on overall batch processing when new jobs are introduced.

INDEPENDENT OF JOB SCHEDULING SYSTEMS AND PLATFORMS

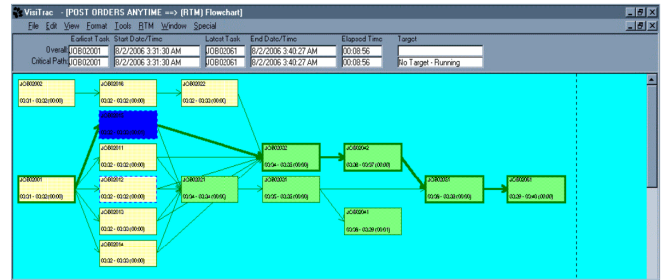
Designed in particular for z/OS systems, VisiTrac, however, operates independently of job scheduling systems and execution platforms. VisiTrac provides an integrated view of the batch environment regardless of what scheduling software or operating system manages the environment. Equally important for companies switching job scheduling systems, VisiTrac preserves seamless processing across the changeover. VisiTrac supports all z/OS scheduling systems like IBM-TWS / OPC, BMC-CONTROL-M, ASG-ZEKE, CA-JOBTRAC, CA-7, CA-SCHEDULER, and others. Also, VisiTrac can provide interfaces for non-MVS platforms. Open Architecture allows expanded use.

REAL-TIME MONITOR (RTM)

This add-on module provides you with a tool that will monitor batch processes as they run. Thus you will know the disposition of the process at all times. If a job is running late, you can now exercise immediate action to correct it.



NAME	Estimated End Time	STATUS
"TOPVIEW"		000% - No Status
INVENTORY FROM JOB01022	8/2/2006 3:34:32 AM	033% Process Running - Late (Late by: 00:34)
INVENTORY MON WED FRI	8/2/2006 3:36:23 AM	022% Process Running - Late (Late by: 00:36)
INVENTORY TUE THUR		000% - Has Not Started - Next Start After: 8/3/2006 12:00:00 AM
POST ORDERS ANYTIME	8/2/2006 3:42:47 AM	107% Process Running - No Target
POST ORDERS EVERY 5 DAYS		000% - Has Not Started - Next Start After: 8/5/2006 12:00:00 AM
POST ORDERS FRI		000% - Has Not Started - Next Start After: 8/4/2006 12:00:00 AM
POST ORDERS FROM JOB02032	8/2/2006 3:37:06 AM	014% Process Running - On Time (Early by: 02:22)
POST ORDERS MON WED	8/2/2006 3:46:22 AM	005% Process Running - Jeopardy (Early by: 00:13)
POST ORDERS WITH JOB02033	8/2/2006 3:39:22 AM	010% Process Running - Jeopardy (Early by: 00:20)
POST ORDERS WITHOUT JOB02033	8/2/2006 3:39:12 AM	010% Process Running - Jeopardy (Early by: 00:20)
TOTAL REQUESTS - AM RUN	8/2/2006 3:33:08 AM	06% Process Running - On Time (Early by: 06:31)
TOTAL REQUESTS - PM RUN		000% - Has Not Started - Next Start After: 8/2/2006 10:05:00 AM



The RTM provides an Alert subsystem that can be configured to produce alerts to the connected system(s) of events seen during normal monitoring.

The RTM uses the basic modeling engine to predict overall finish times. RTM provides data to help you select processes that are late. Immediate notification means finding and fixing the problem now and understanding the relationship of the problem task to the overall process execution.

BENEFITS

- Problem isolation
- Proactive performance maintenance
- Trending Analysis
- Tuning and Modeling the Batch Structure
- Predict process completion time
- Predictive analysis using flowcharts
- Supports all major scheduling products
- Open architecture allows expanded use

REAL - TIME MONITOR

- Find problems at the task level
- Predicts when work will be finished
- Help prioritize your work
- Identifies problems when they occur
- Build on your VisiTrac investment



SOFTWARE ENGINEERING OF AMERICA®
 Phone: 516.328.7000 • Fax: 516.354.4015 • www.seasoft.com

All trademarks & copyrights are the property of their respective owners.